

# Storm Water Management Facilities FAQ

## **What is a storm water management facility?**

A storm water management facility, or SWMF, is a man-made pond that collects runoff from snow and rain, and diverts it away from homes and streets. The SWMFs filter the runoff and they allow for a controlled release of water into the local ecosystem. SWMFs are considered to the state of the art in remediating runoff and they are now mandatory, as required by Alberta Environment.

## **Why do we need a SWMF at this location?**

Storm water management facilities are a requirement for new development. They help protect our homes as part of the overall drainage plan to contain and hold storm runoff during major storm events. Without these facilities, flooding of parks, roadways, and homes would be a high risk.

## **When was the decision made to develop this area into a SWMF?**

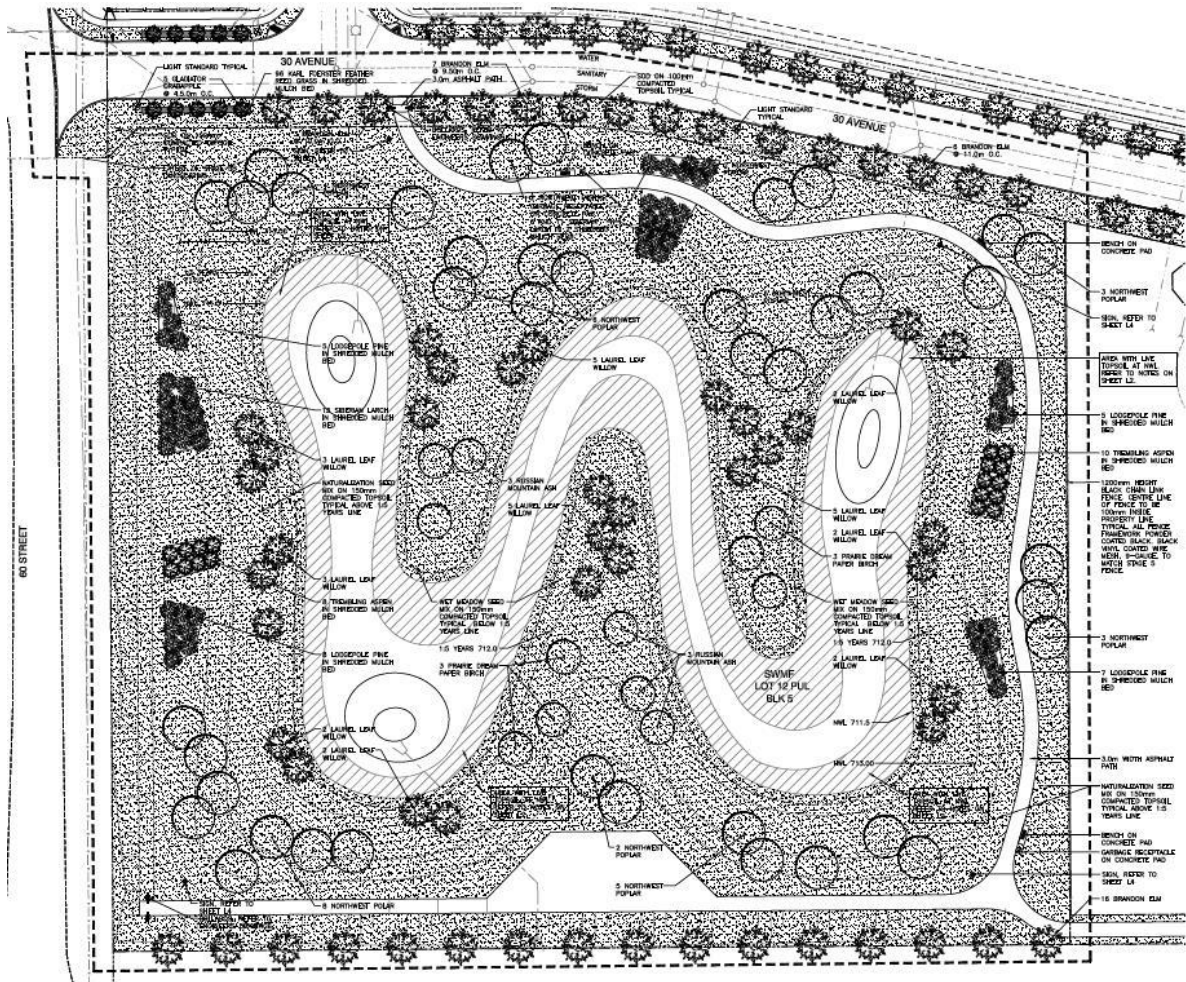
The SWMF that's being built in Place Chaleureuse was proposed as part of the Place Chaleureuse Outline Plan, which was approved following a public hearing held in Council Chambers on June 9, 2015. The public hearing was advertised in La Nouvelle Beaumont News. The SWMF meets both Beaumont's and Alberta Environment's storm water management guidelines.

The original plan for this area was approved on June 24, 2003 and it included the development of this SWMF at the same location.

## **What's the plan for the Place Chaleureuse SWMF?**

The current project will be "naturalized" to a greater degree than existing SWMFs. See the diagram. In time, nature will reclaim the SWMF. This particular SWMF includes enhanced features to create a naturalized area. This includes reusing exiting live soils from the wetlands to re-establish natural vegetation. This will promote improved water quality, decreases erosion and create a naturalized shoreline.

Various seed mixes will be used including a naturalization seed mix and wet meadow mix. This will help promote the growth of native flora in the area. Finally, we will increase the density of trees within the pond area.



**How long will it take until the area looks natural?**

Within a few years the area will be inviting and will provide an opportunity for bird watching while silently performing an important environmental service by filtering runoff and allowing it to be released back into the local environment.

**Does Beaumont have any plans to leave some areas natural?**

Yes. Beaumont staff is working with Wild Beaumont to identify natural areas that can be left to develop on their own. We plan to expand this concept to more areas in Beaumont. To be sure, as Beaumont continues to grow, the current limited land area puts pressure on all forms of land use. This is another reason that annexation is so important for Beaumont.

**Questions?**

If you have additional questions, or if you wish to comment, contact [engineering@beaumont.ab.ca](mailto:engineering@beaumont.ab.ca).