

**CITY OF BEAUMONT
Bylaw Number 1016-22**

LAKEVIEW NEIGHBOURHOOD LAND USE BYLAW AMENDMENT

A BYLAW OF THE CITY OF BEAUMONT, IN THE PROVINCE OF ALBERTA TO amend Land Use Bylaw 944-19 to redistrict a portion of the Lakeview Neighbourhood.

WHEREAS, pursuant to Section 639, 640 and 692 of the Municipal Government Act, R.S.A. 2000, c. M-26, Statutes of Alberta and amendments thereto, for the purpose of providing a framework for subsequent subdivision and development of an area of land in a municipality, the City of Beaumont Council has adopted Land Use Bylaw 944-19;

AND WHEREAS, the Council deems it desirable to amend Land Use Bylaw 944-19;

NOW THEREFORE, the Council of the City of Beaumont, duly assembled, enacts as follows:

1. Bylaw 944-19, Beaumont Land Use Bylaw Map 9 is amended by redistricting the portions of SE-26-50-24-4 and Lot 1, Block 1, Plan 072 1688 from Agricultural Holding (AH) District to Commercial (C) District, Conventional Neighborhood (CN) District, and Integrated Neighborhood (IN) District as shown on Schedule A, which is attached to and forms part of this bylaw.
2. The Chief Administrative Officer is authorized to consolidate Bylaw 944-19.
3. This bylaw shall come into force and take effect when it has received third reading and is duly signed.

READ A FIRST TIME IN COUNCIL THIS 14th DAY OF JULY, 2022.

STATUTORY PUBLIC HEARING HELD THIS 28 DAY OF June, 2022.

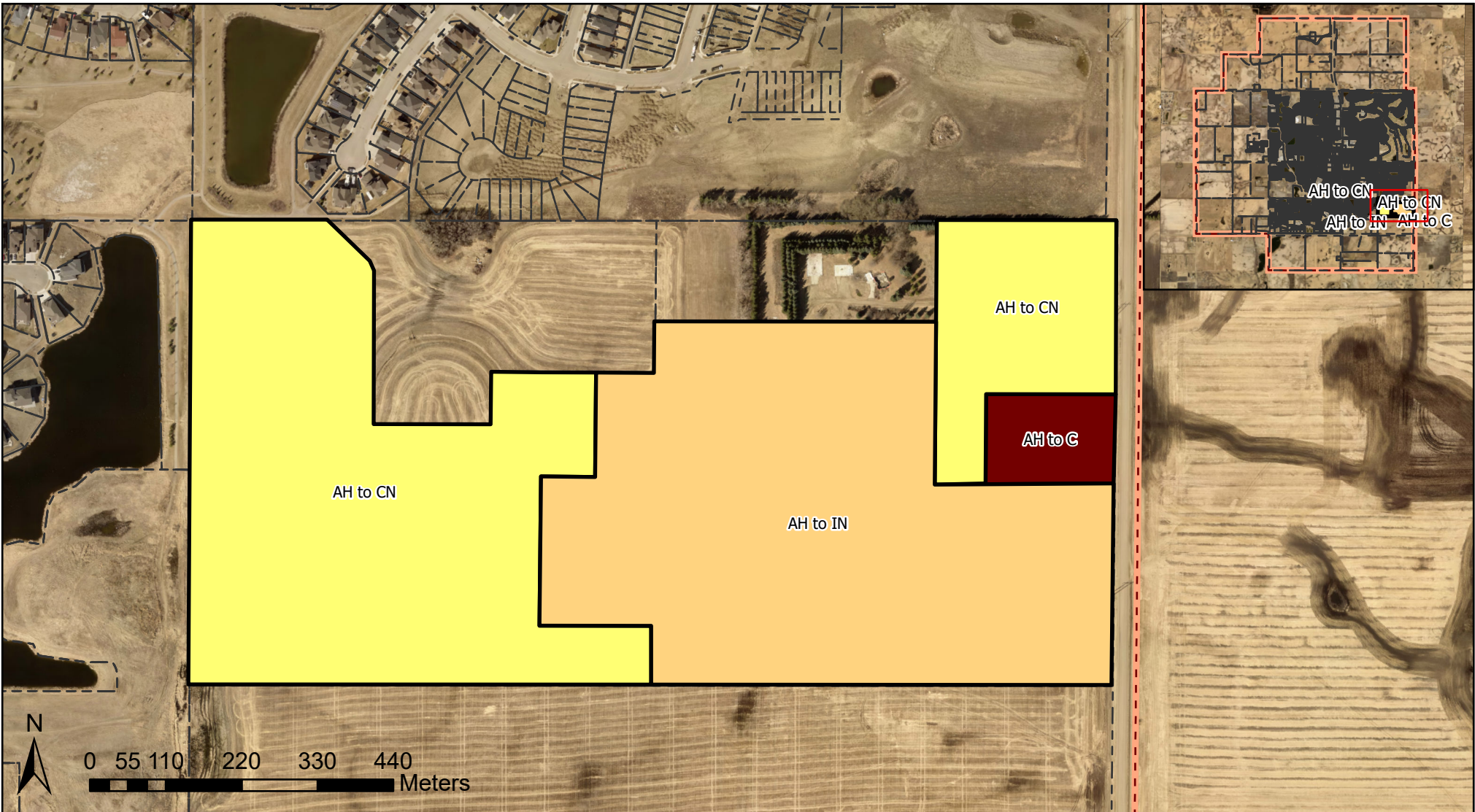

READ A SECOND TIME IN COUNCIL THIS 28 DAY OF June, 2022.

READ A THIRD TIME IN COUNCIL THIS 28 DAY OF June, 2022.

SIGNED THIS 29 day of June, 2022.



MAYOR

CITY CLERK

City of Beaumont
5600 49 Street
Beaumont, AB
T4X 1A1

Redistricting Map - Lakeview North		
North half of S.E. 1/4 Sec. 26-50-24-W4M		
Numeric Scale: 1:8,000	Date - m\dd\yrr 06\13\2022	Mapped by: Kemi.M
Redistricting (LUB) Application No: N/A	Checked by: Emily.S	
Projected Coordinate System: CANADA NAD 83-3TM-114		

Legend	
AH	Agricultural Holdings District (AH)
CN	Conventional Neighborhood District (CN)
IN	Integrated Neighborhood District (IN)
C	Commercial District (C)
	Registered Parcels
	Beaumont City Boundary