



**Subdivision Authority Agenda  
Wednesday, May 3, 2023 at 1:00pm**

**1. The Subdivision Authority will review the following proposed Subdivision Time Extension on May 3, 2023:**

- a. SDA-21-08 Le Reve SW Phase 1B** (One year time extension)  
One year time extension for Le Reve SW Phase 1B for 98 Single Detached Residential Lots, 2 Medium Density Residential Lots, 1 PUL and 2 Municipal Reserve Lots from a portion of Plan 782 1085, Block 1.

- *Attachments: Location Map and Tentative Subdivision Plan*

**2. The Subdivision Authority's decision will be posted on May 4, 2023**

---

Contact Sara Boulos, Development Planner at [sara.boulos@beaumont.ab.ca](mailto:sara.boulos@beaumont.ab.ca) or 780-340-1784 for more information.



Le Reve Drive

Commercial

Park  
1.407 ha  
(3.477 Acres)  
1 MR  
BLOCK 2

MDR  
0.864 ha  
(2.135 Acres)  
2  
BLOCK 3

Stage 1B - Phase 1  
2.246 ha  
(5.549 Acres)

MDR  
0.712 ha  
(1.760 Acres)  
1  
BLOCK 3

MDR

MDR

Stage 1A  
BLOCK 1  
PLAN 7821085

Future  
Development

Stage 1B  
8.847 ha  
(21.862 Acres)

- LEGEND:**
- Stage 1B Subdivision Boundary
  - Stage 1A Subdivision Boundary
  - Phase 1 Boundary
  - Zero Lot Line Dwelling (Does Not Represent The Building Size or Location).

- NOTES:**
- All distances are shown in metres and decimals thereof.
  - Distances on the curved boundaries are arc lengths.
  - Area dealt with by this plan shown bounded thus contains: 8.847 ha, 2 MDR parcels, and 98 small residential lots.

**THIS IS A CONCEPT PLAN ONLY. SUBJECT TO CHANGE.**

DATE: APRIL 28, 2022

PROJECT MANAGER: ALVARO\_SOTO

CLIENT: REDCO DEVELOPMENTS LTD

PROJECT: LE RÊVE SOUTHWEST - STAGE 1B  
BLOCK 1, PLAN 7821085

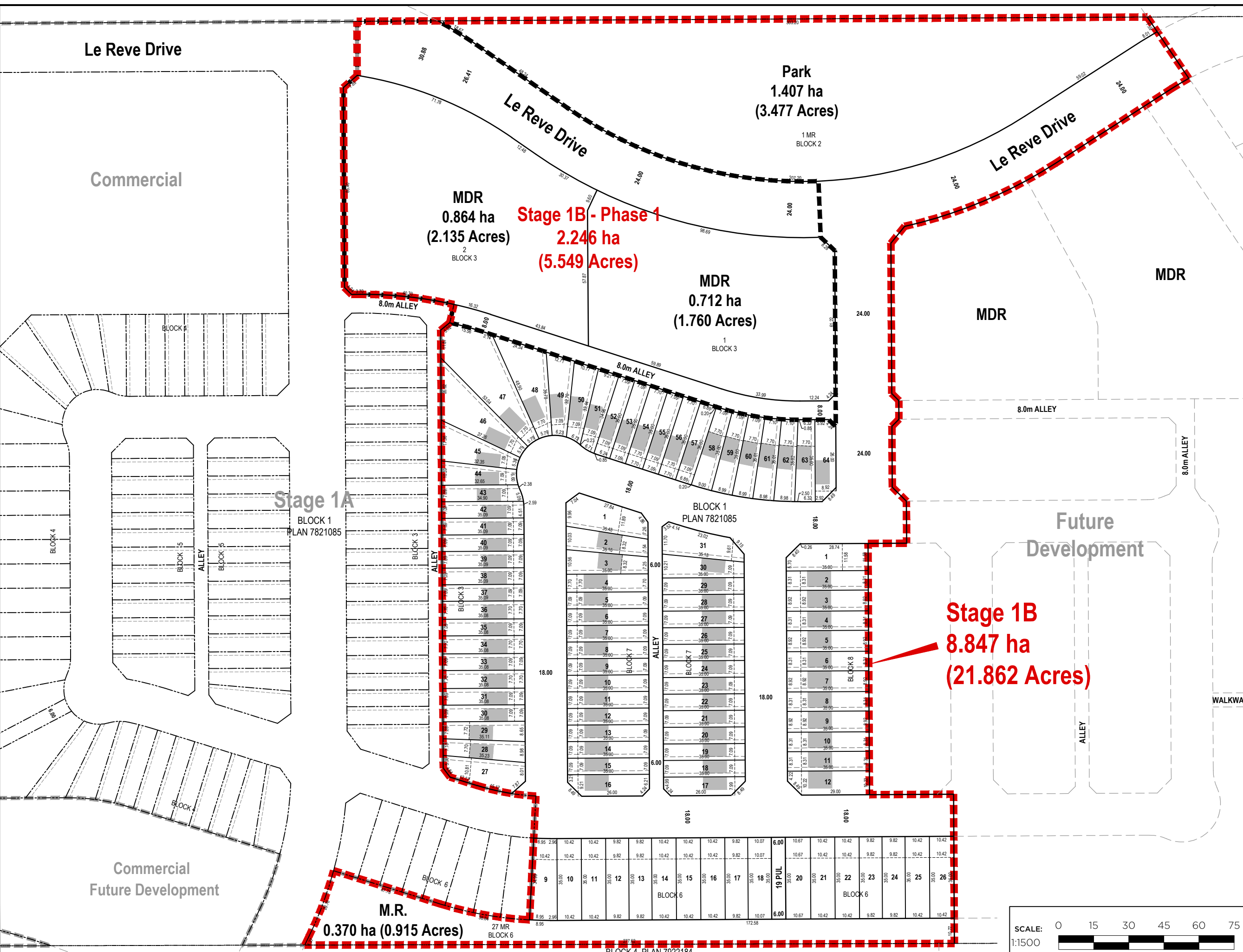
DRAWING TITLE: TENTATIVE PLAN OF SUBDIVISION

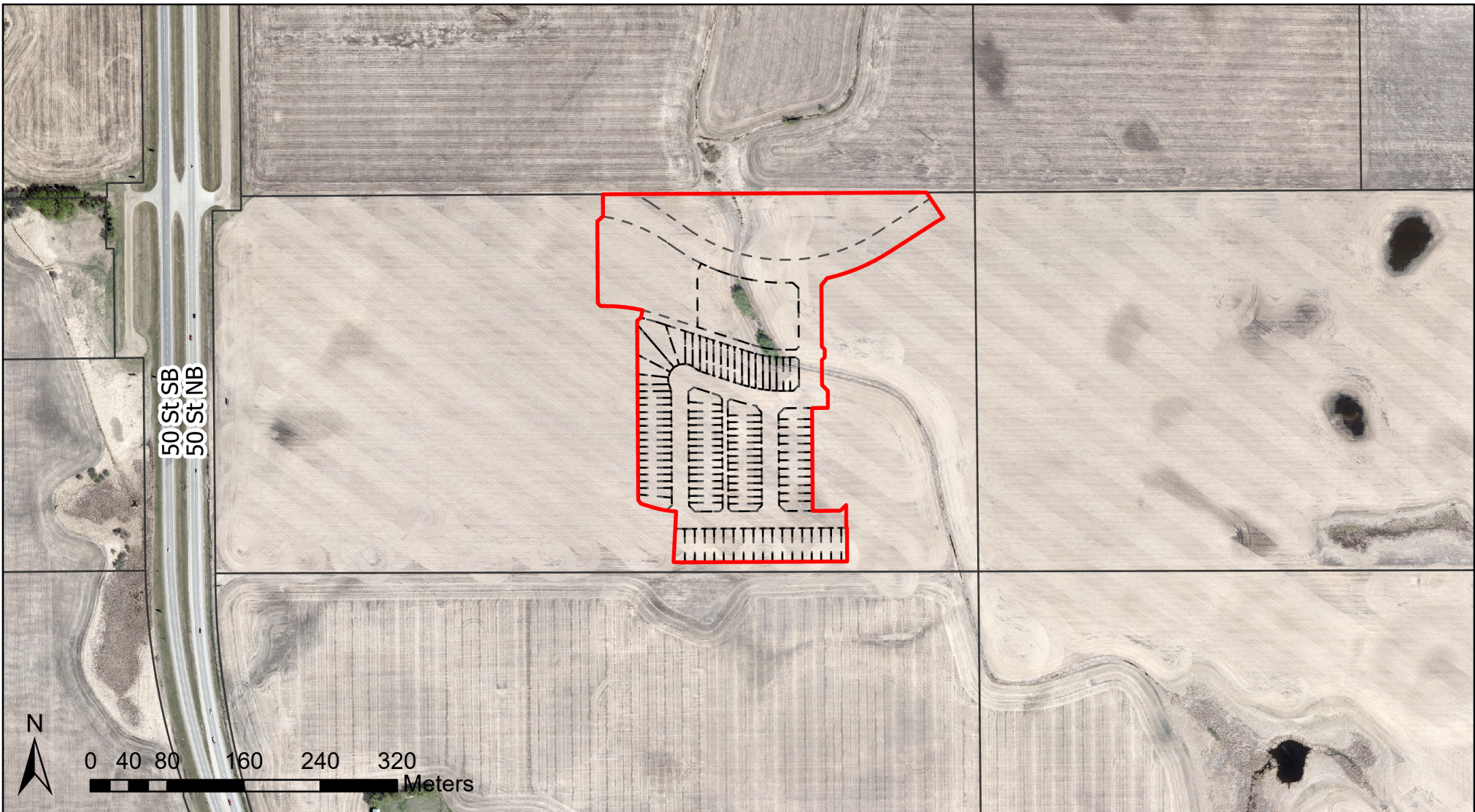
PROJECT NO/ DRAWING NO: 2019074-001



**Invistec Consulting Ltd.**  
Suite 1700, 10130 - 103 Street NW  
Edmonton, Alberta, T5J 3N9  
(780) 293 - 7373  
www.invistec.ca

THE CONTRACTOR SHALL VERIFY AND BE RESPONSIBLE FOR ALL DIMENSIONS. DO NOT SCALE THE DRAWING. ANY ERRORS OR OMISSIONS SHALL BE REPORTED TO INVISTEC CONSULTING LTD. AS SOON AS POSSIBLE.  
THE COPYRIGHTS TO ALL DESIGNS AND DRAWINGS ARE THE PROPERTY OF INVISTEC CONSULTING LTD. REPRODUCTION OR USE FOR ANY PURPOSE OTHER THAN THAT AUTHORIZED BY INVISTEC CONSULTING LTD. IS PROHIBITED.





**Location Map - Le Reve SW Phase 1B**

BLOCK 1, PLAN 782 1085

Application # Label:  
SDA-21-08

Mapped by:  
Kemi.M




Checked by:  
Coralie.V

Numeric Scale:  
1:5,780

Date - mn\dd\yr  
01\07\2022

Projected Coordinate System:  
CANADA NAD 83-3TM-114

**Legend**

-  Registered Parcels
-  Le Reve SW Phase 1B Boundary
-  Proposed Subdivision



City of Beaumont  
5600 49 Street  
Beaumont, AB  
T4X 1A1