



**Subdivision Authority Agenda  
Wednesday, February 7<sup>th</sup>, 2024 at 1:00pm**

**1. The Subdivision Authority will review the following proposed Subdivision on February 7, 2024:**

**a. SDA-23-06 Ruisseau Phase 7**

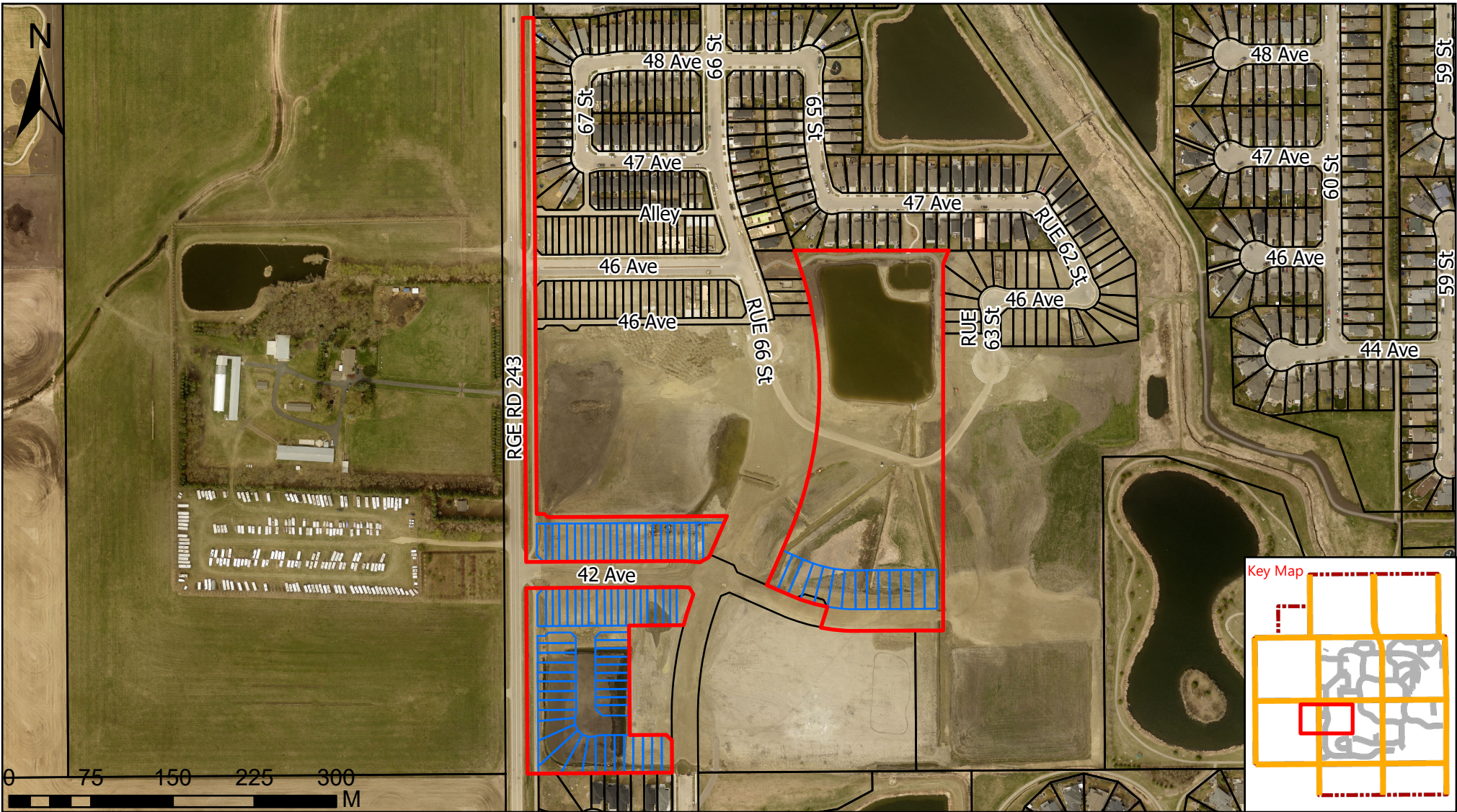
Tentative Plan of subdivision to create 46 single detached residential lots and 44 multi attached dwellings from a portion of Plan N.W 1/4 Sec.27-50-24-4

- *Attachments: Location Map and Tentative Subdivision Plan*

**2. The Subdivision Authority's decision will be posted on February 9, 2024**

---

Contact the File Planner at [planning@beaumont.ab.ca](mailto:planning@beaumont.ab.ca) or 780-929-8782 for more information.



### Location Map - SDA-23-06 Ruisseau Phase7



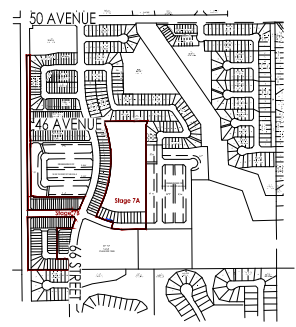
City of Beaumont  
5600 49 Street  
Beaumont, AB  
T4X 1A1

Numeric Scale: 1:5,000	Date - mm\dd\yr 11\16\2023	Mapped by: Uche.D
Projected Coordinate System: CANADA NAD 83-3TM-114		Checked by: Georgina.C

### Legend

- Boundary No: SDA-23-06
- Proposed Lot
- Registered Parcels

Disclaimer:  
ALL RIGHTS RESERVED. NO PART OF THIS MAP MAY BE REPRODUCED IN ANY FORM OR BY ANY MEANS WITHOUT THE WRITTEN CONSENT OF THE CITY OF BEAUMONT. THE CITY OF BEAUMONT PROVIDED THIS INFORMATION IN GOOD FAITH, BUT PROVIDES NO WARRANTY NOR ACCEPTS ANY LIABILITY ARISING FROM INCORRECT, INCOMPLETE OR MISLEADING INFORMATION OR ITS IMPROPER USE. INFORMATION IS MAINTAINED ON A REGULAR BASIS. DO NOT REPRODUCE WITHOUT PERMISSION. 2022 AERIAL IMAGERY  
City of Beaumont 5600 49 Street Beaumont Alberta T4X 1A1 Telephone: 780-929-8782 Web: www.beaumont.ab.ca



LOCATION PLAN  
NOT TO SCALE  
SHOWING PROPOSED SUBDIVISION OF PART OF:  
"N.W. 1/4 SEC. 27-50-24-4"

NOTES:  
THIS IS NOT A LEGAL PLAN AND MAY BE SUBJECT TO ERRORS AND/OR OMISSIONS.  
ALL DISTANCES ARE SHOWN IN METRES AND DECIMALS THEREOF.  
DISTANCES ON CURVED BOUNDARIES ARE ARC LENGTHS.  
AREA DEALT WITH BY THIS PLAN SHOWN BOUNDED AS THUS. —

ZERO LOT LINE DENOTED AS THUS. —

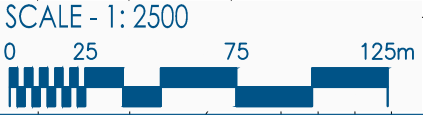
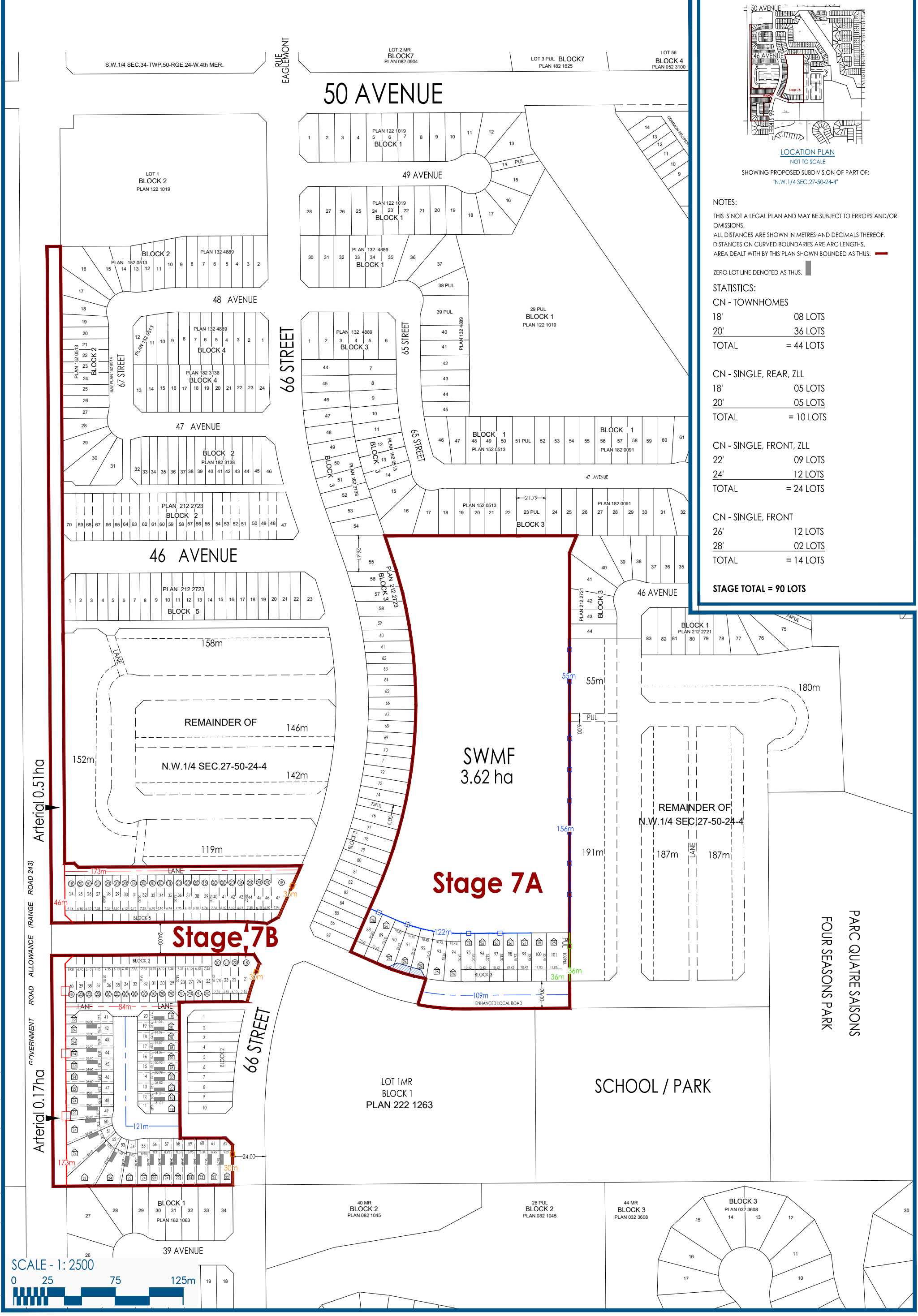
STATISTICS:  
CN - TOWNHOMES  
18' 08 LOTS  
20' 36 LOTS  
TOTAL = 44 LOTS

CN - SINGLE, REAR, ZLL  
18' 05 LOTS  
20' 05 LOTS  
TOTAL = 10 LOTS

CN - SINGLE, FRONT, ZLL  
22' 09 LOTS  
24' 12 LOTS  
TOTAL = 24 LOTS

CN - SINGLE, FRONT  
26' 12 LOTS  
28' 02 LOTS  
TOTAL = 14 LOTS

STAGE TOTAL = 90 LOTS



LAND-USE STATS  
RUISSEAU - STAGE 7  
BEAUMONT - ALBERTA

QUALICO<sup>®</sup>  
communities

January 12, 2024

L:\Projects\BEAUMONT\Ruisseau\Stage 7\Planning\01\_Land-Use\subdiv\stage\_7a\_7b\_12jan2024.dwg