



**Subdivision Authority Agenda
Wednesday, March 6th 2024 at 1:00pm**

1. The Subdivision Authority will review the following proposed Subdivision on March 6th, 2024:

a. SDA-23-03 Beau Val Phase 7 Lot Split

Tentative Plan to subdivide a portion of Plan 2022084; Block 5; Lot 3 into 2 lots

- *Attachments: Location Map and Tentative Subdivision Plan*

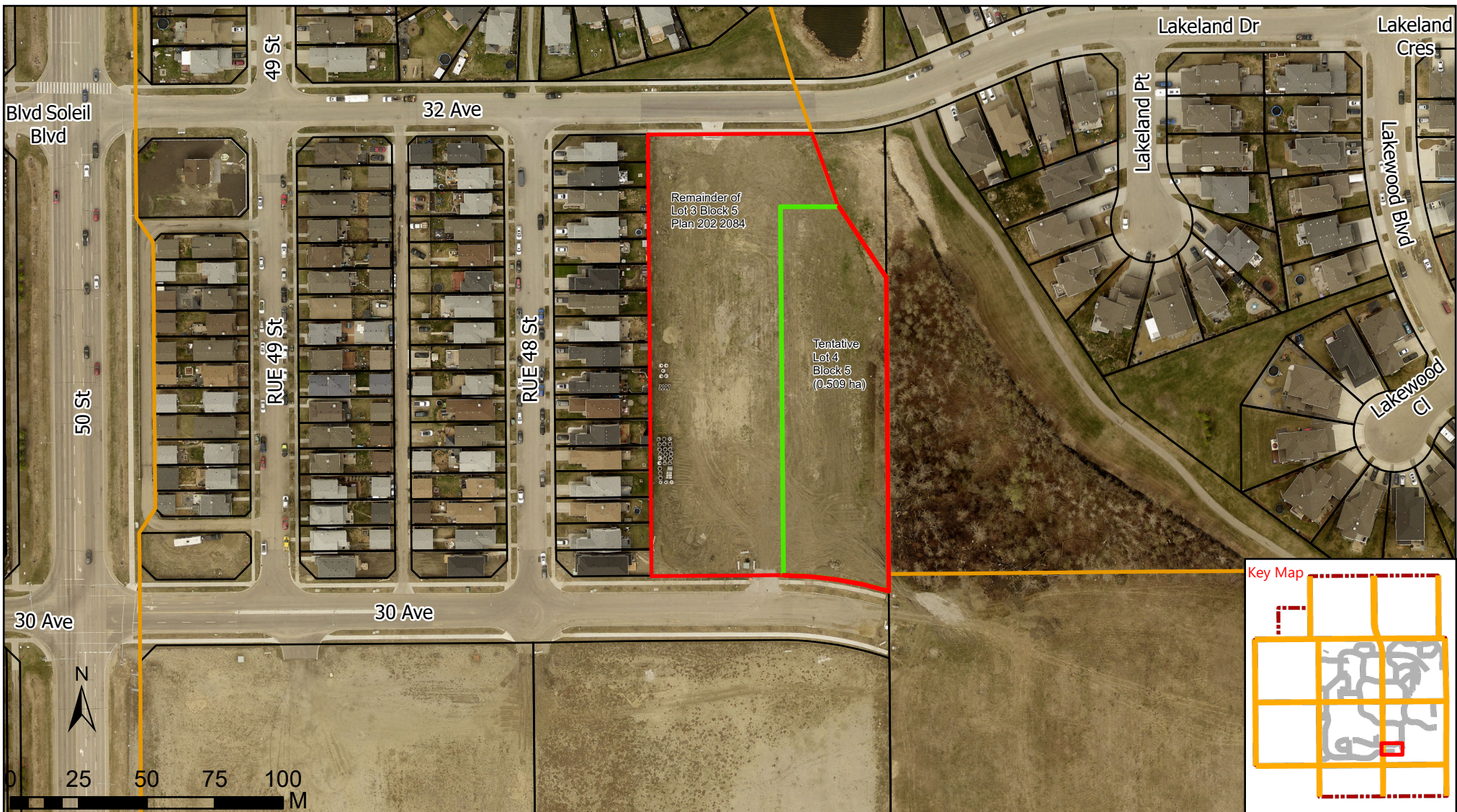
b. SDA-23-04 Beau Val Phase 7 Bare Land Condominium

Tentative Plan to subdivide a portion of Plan 2022084; Block 5; Lot 5 into bare land condominiums

- *Attachments: Location Map and Tentative Subdivision Plan*

2. The Subdivision Authority's decision will be posted on March 8th, 2024

Contact the File Planner at planning@beaumont.ab.ca or 780-929-8782 for more information.



City of Beaumont
 5600 49 Street
 Beaumont, AB
 T4X 1A1

Location Map - SDA-23-03 Lot Split

Numeric Scale: 1:2,000	Date - mm\dd\lyr 09\04\2023	Mapped by: Uche.D
Projected Coordinate System: CANADA NAD 83-3TM-114		Checked by: Coralie.V

Disclaimer:
 ALL RIGHTS RESERVED. NO PART OF THIS MAP MAY BE REPRODUCED IN ANY FORM OR BY ANY MEANS WITHOUT THE WRITTEN CONSENT OF THE CITY OF BEAUMONT. THE CITY OF BEAUMONT PROVIDED THIS INFORMATION IN GOOD FAITH, BUT PROVIDES NO WARRANTY NOR ACCEPTS ANY LIABILITY ARISING FROM INCORRECT, INCOMPLETE OR MISLEADING INFORMATION OR ITS IMPROPER USE. INFORMATION IS MAINTAINED ON A REGULAR BASIS. DO NOT REPRODUCE WITHOUT PERMISSION. 2022 AERIAL IMAGERY
 City of Beaumont 5600 49 Street Beaumont Alberta T4X 1A1 Telephone: 780-929-8782 Web: www.beaumont.ab.ca

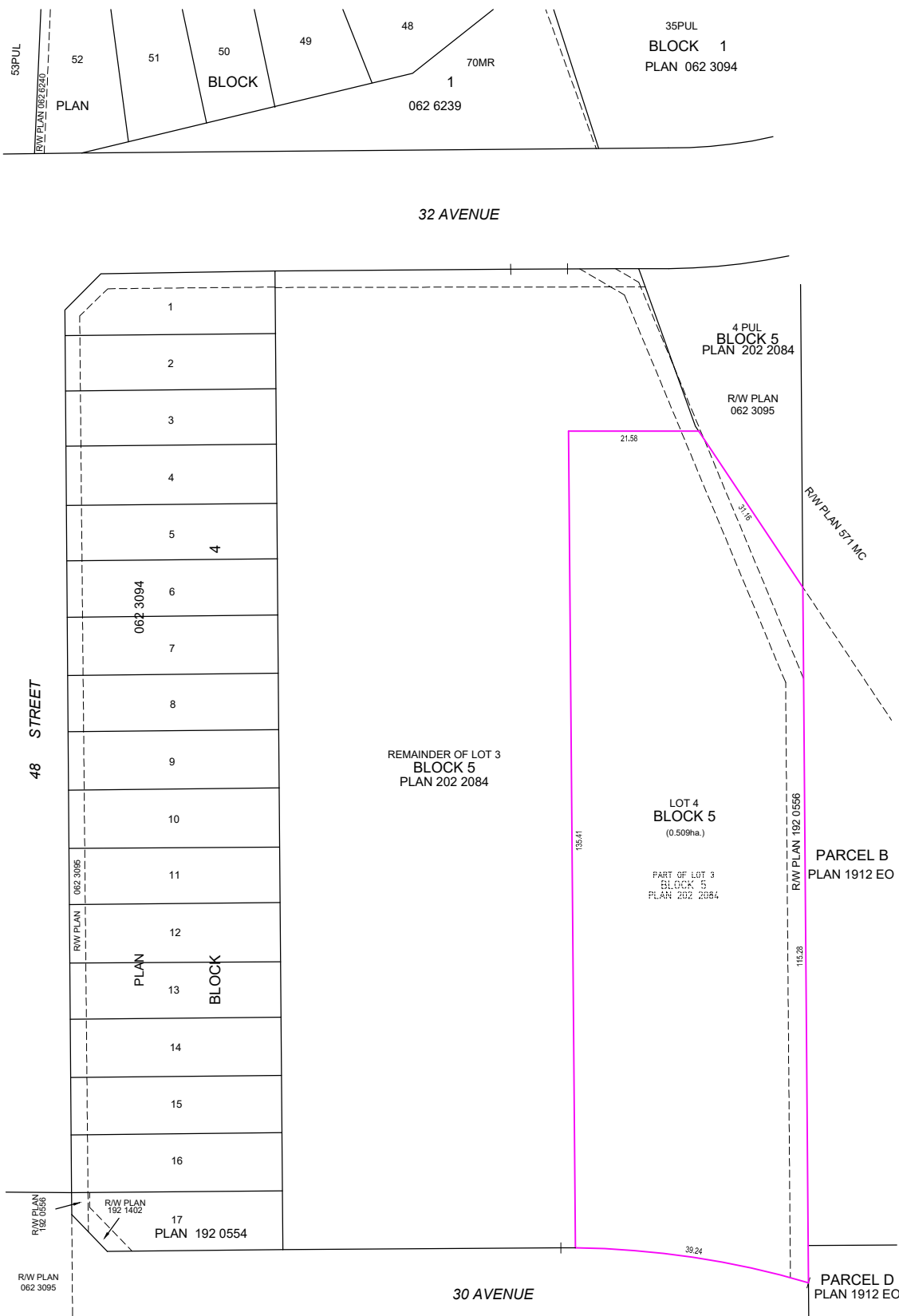
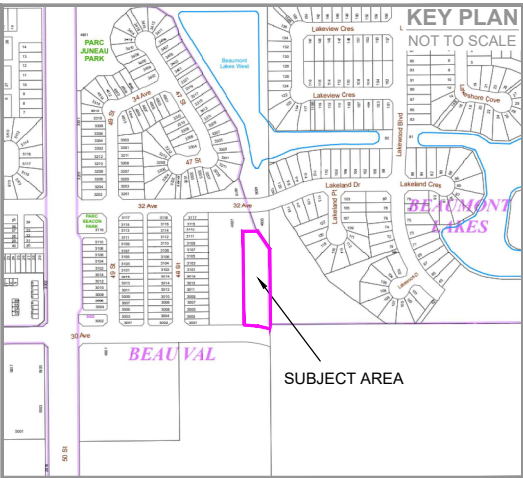
Legend

- Boundary No: SDA-23-03
- Proposed Parcel Boundary
- Beau Val Neighbourhood Boundary
- Registered Parcels

EAST PINE LP

NOTES:

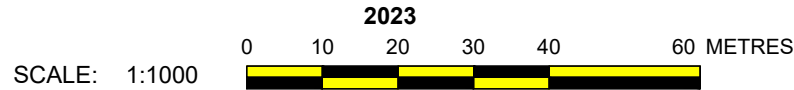
- ALL DISTANCES ARE SHOWN IN METRES AND DECIMALS THEREOF.
- ALL DISTANCES ON CURVED BOUNDARIES ARE ARC LENGTHS.
- ALL INFORMATION SHOWN ON THIS PLAN IS BOTH TENTATIVE AND PRELIMINARY, AND SUBJECT TO CHANGE BY THE 'PLAN OF SURVEY'.
- THE BOUNDARY SHOWN, EVEN IF ANNOTATED, IS SUBJECT TO CHANGE BY THE 'PLAN OF SURVEY'.
- THE ZONING OF THIS SUBJECT AREA IS 'IN'.
- PLAN TO BE SUBDIVIDED SHOWN OUTLINED THUS: AND CONTAINS: 0.509 ha.



REV. NO.	DATE	ITEM	BY
0	JULY21/23	ORIGINAL PLAN COMPLETED	RH

REVISIONS

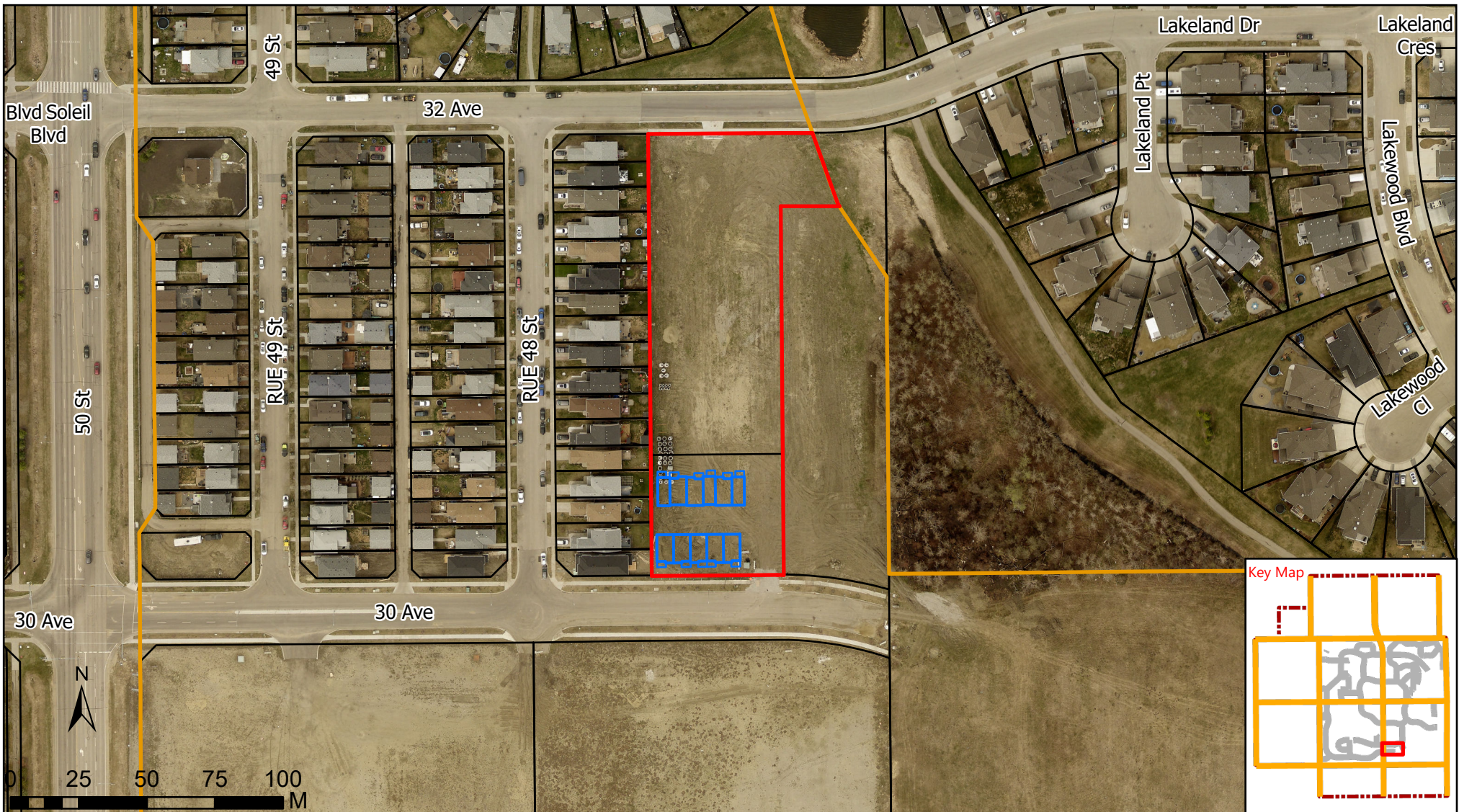
EAST PINE LP
 TENTATIVE PLAN SHOWING PROPOSED
SUBDIVISION
 OF
 PART OF LOT 3, BLOCK 5, PLAN 202 2084
 WITHIN THE
 S.W. 1/4 SEC. 26 - TWP. 50 - RGE. 24 - W. 4TH MER.
BEAUMONT - ALBERTA



Pals Geomatics Corp. Phone: (780) 455 - 3177 Fax: (780) 451 - 2047
 Email: edmonton@palsgeomatics.com
 10704-176 Street NW, Edmonton, Alberta T5S 1G7

FILE NO.	123001000T1	DRAFTED BY:	RH	CHECKED BY:	MK
----------	-------------	-------------	----	-------------	----





City of Beaumont
5600 49 Street
Beaumont, AB
T4X 1A1

Location Map - SDA-23-04 Bare Land Condominium

Numeric Scale: 1:2,000	Date - mm\dd\yr 09\04\2023	Mapped by: Uche.D
Projected Coordinate System: CANADA NAD 83-3TM-114		Checked by: Coralie.V

Disclaimer:

ALL RIGHTS RESERVED. NO PART OF THIS MAP MAY BE REPRODUCED IN ANY FORM OR BY ANY MEANS WITHOUT THE WRITTEN CONSENT OF THE CITY OF BEAUMONT. THE CITY OF BEAUMONT PROVIDED THIS INFORMATION IN GOOD FAITH, BUT PROVIDES NO WARRANTY NOR ACCEPTS ANY LIABILITY ARISING FROM INCORRECT, INCOMPLETE OR MISLEADING INFORMATION OR ITS IMPROPER USE. INFORMATION IS MAINTAINED ON A REGULAR BASIS. DO NOT REPRODUCE WITHOUT PERMISSION. 2022 AERIAL IMAGERY
City of Beaumont 5600 49 Street Beaumont Alberta T4X 1A1 Telephone: 780-929-8782 Web: www.beaumont.ab.ca

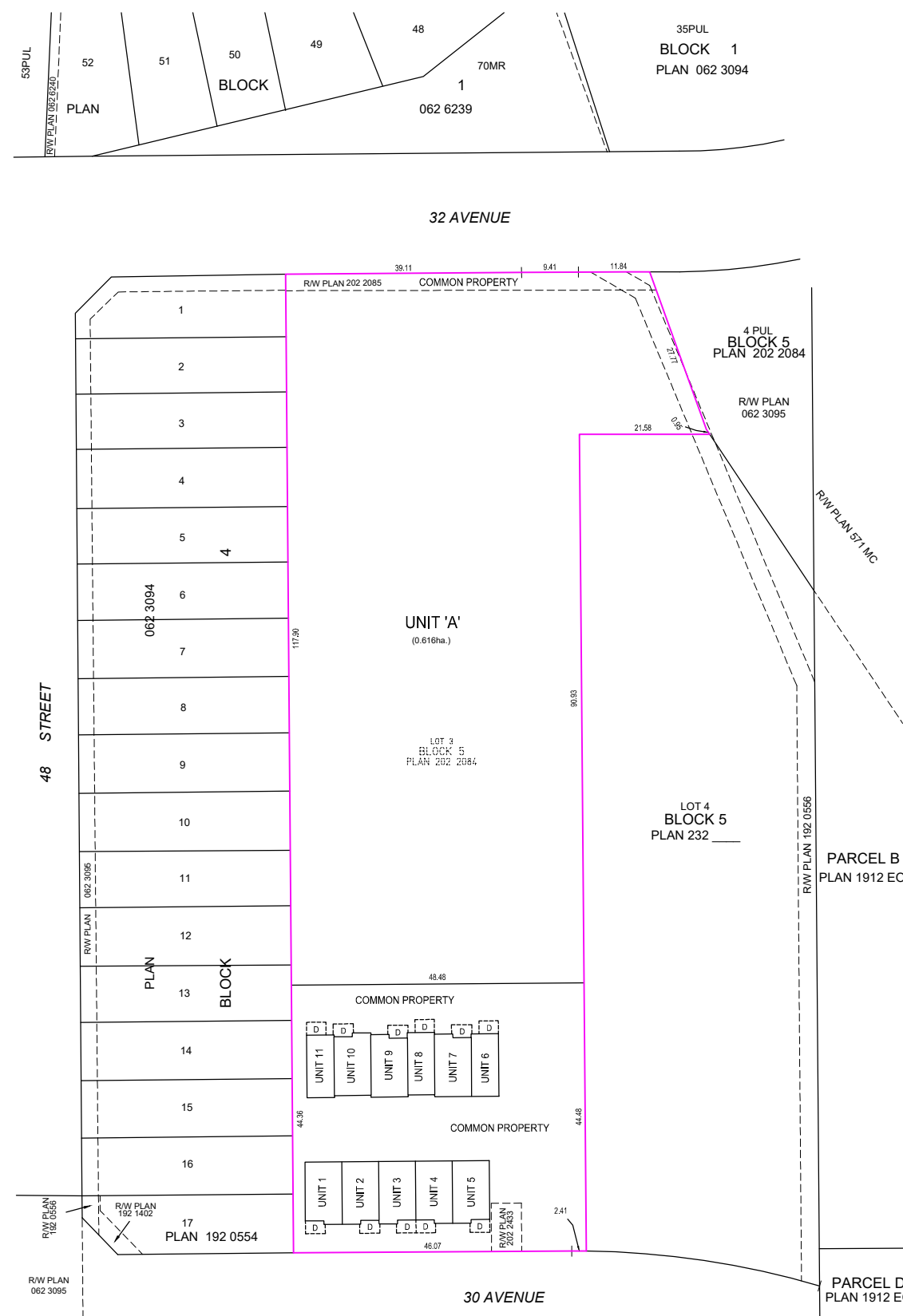
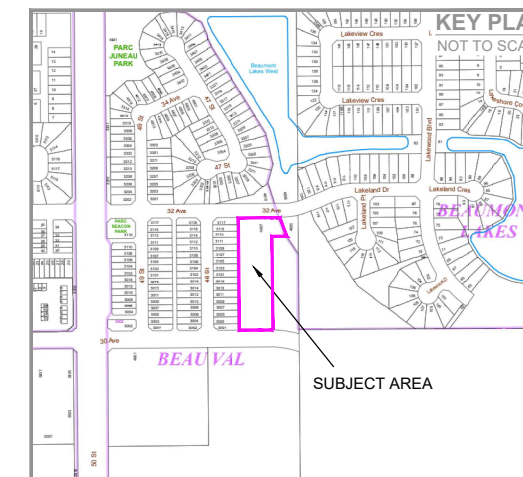
Legend

- Boundary No: SDA-23-04
- Bare Land Condominium
- Beau Val Neighbourhood Boundary
- Registered Parcels

EAST PINE LP

NOTES:

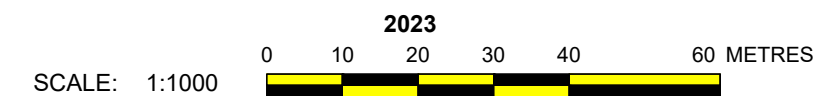
- ALL DISTANCES ARE SHOWN IN METRES AND DECIMALS THEREOF.
- ALL DISTANCES ON CURVED BOUNDARIES ARE ARC LENGTHS.
- ALL INFORMATION SHOWN ON THIS PLAN IS BOTH TENTATIVE AND PRELIMINARY, AND SUBJECT TO CHANGE BY THE 'PLAN OF SURVEY'.
- THE BOUNDARY SHOWN, EVEN IF ANNOTATED, IS SUBJECT TO CHANGE BY THE 'PLAN OF SURVEY'.
- THE ZONING OF THIS SUBJECT AREA IS 'IN'.
- PLAN TO BE SUBDIVIDED SHOWN OUTLINED THUS: AND CONTAINS: 0.831 ha.



REV. NO.	DATE	ITEM	BY
0	JULY21/23	ORIGINAL PLAN COMPLETED	RH

REVISIONS

EAST PINE LP
 TENTATIVE PLAN SHOWING PROPOSED
CONDOMINIUM DEVELOPMENT
 OF
 LOT 3, BLOCK 5, PLAN 202 2084
 WITHIN THE
 S.W. 1/4 SEC. 26 - TWP. 50 - RGE. 24 - W. 4TH MER.
BEAUMONT - ALBERTA



Pals Geomatics Corp. Phone: (780) 455 - 3177 Fax: (780) 451 - 2047
 Email: edmonton@palsgeomatics.com
 10704-176 Street NW, Edmonton, Alberta T5S 1G7

FILE NO.	123001000T2	DRAFTED BY:	RH	CHECKED BY:	MK
----------	-------------	-------------	----	-------------	----

O:\2023\123001000 East Pine LP Condominium\CADD\123001000T2.dwg, 7/26/2023 2:13:56 PM