



**Subdivision Authority Agenda
Wednesday, August 28, 2024 at 1:00pm**

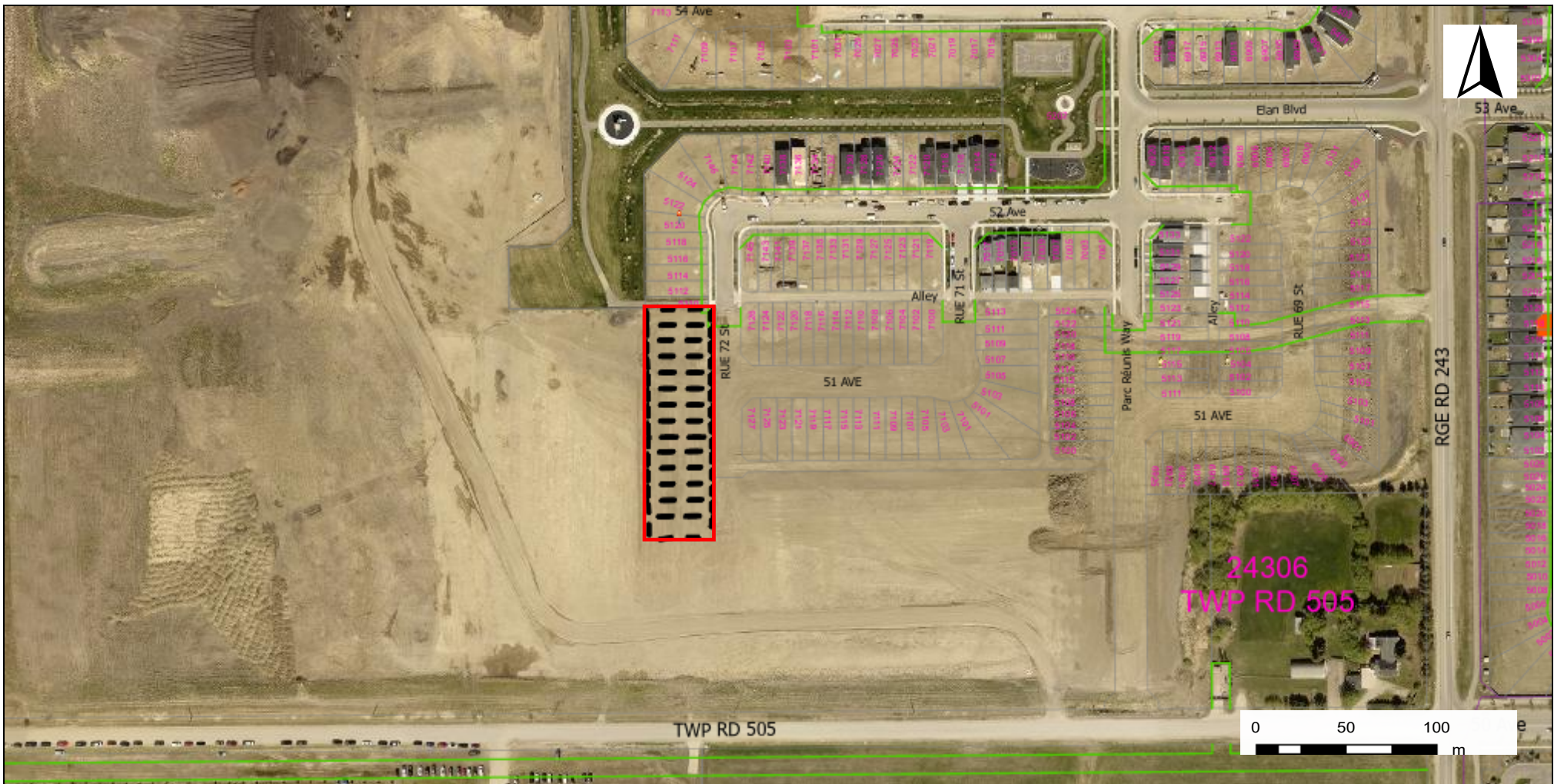
1. The Subdivision Authority will review the following proposed Subdivision on August 28, 2024:

a. SDA-24-07 Elan Phase 3C

Invistec Consulting on behalf of 1662825 Alberta Ltd. submitted a subdivision application to create 14 Single Detached Residential Lots

2. The Subdivision Authority's decision will be posted on August 30, 2024

Contact Planning at planning@beaumont.ab.ca for more information.



City of Beaumont
 5600 49 Street
 Beaumont, AB
 T4X 1A1

Location Map

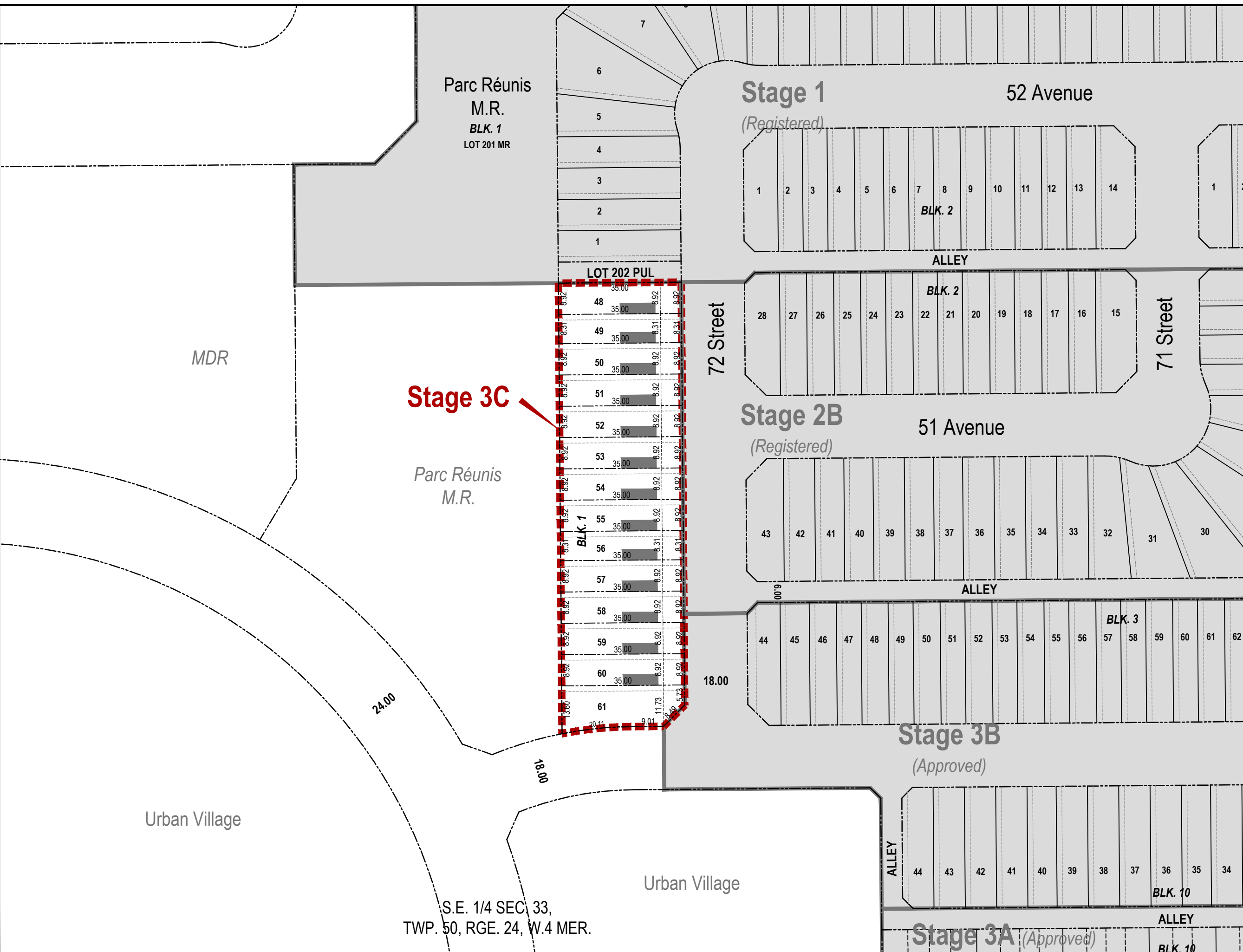
Portion of S.E. Sec. 33 Twp. 50 Rge. 24 W4M

Application No. SDA-24-07 Elan 3C	Mapped By: Georgina C.	Checked By: Aleshia I.
Numeric Scale		Date
1: 3212		June 18, 2024

Projected Coordinate System
 CANADA NAD 83-3TM 114

Legend

- Elan Phase 3C Subdivision Boundary
- Registered Parcels
- Proposed Subdivision



Stage 3C

LEGEND:

- Elan Stage 3C Subdivision Boundary
- ▭ Elan Stage 1 & 2B & 3A & 3B Subdivision Boundary
- ▬ Zero Lot Line Location

NOTES:

- All distances are shown in metres and decimals thereof.
- Distances on the curved boundaries are arc lengths.
- Area dealt with by this plan shown bounded thus ■■■■■ contains: **0.442 ha**, including **14 single residential lots**.

THIS IS A CONCEPT PLAN ONLY. SUBJECT TO CHANGE.

DATE: AUGUST 9, 2024

PROJECT MANAGER: STEPHANIE_FOSSEN
CLIENT: 1662825 Alberta Ltd.

PROJECT: ELAN NEIGHBOURHOOD - STAGE 3C
 S.E. 1/4 SEC. 33-50-24-4

DRAWING TITLE: TENTATIVE PLAN OF SUBDIVISION

SCALE: 0 10 20 30 40 50
 1:1000

PROJECT NO/ DRAWING NO: 2023035-001

Invistec Consulting Ltd.
 Suite 1700, 10130 - 103 Street NW
 Edmonton, Alberta, T5J 3N9
 (780) 293 - 7373
 www.invistec.ca

THE CONTRACTOR SHALL VERIFY AND BE RESPONSIBLE FOR ALL DIMENSIONS. DO NOT SCALE THE DRAWING. ANY ERRORS OR OMISSIONS SHALL BE REPORTED TO INVISTEC CONSULTING LTD. AS SOON AS POSSIBLE.

THE COPYRIGHTS TO ALL DESIGNS AND DRAWINGS ARE THE PROPERTY OF INVISTEC CONSULTING LTD. REPRODUCTION OR USE FOR ANY PURPOSE OTHER THAN THAT AUTHORIZED BY INVISTEC CONSULTING LTD. IS PROHIBITED.