



**Subdivision Authority Agenda
Wednesday, January 22nd, 2025 at 1:00pm**

1. The Subdivision Authority will review the following proposed Subdivision on January 22, 2025:

a. SDA-24-15 Ruisseau Stage 9

Tentative Plan of subdivision to create 92 single detached residential lots from a portion of Plan N.W. ¼ Sec. 27-50-24-W4M

- *Attachments: Location Map and Tentative Subdivision Plan*

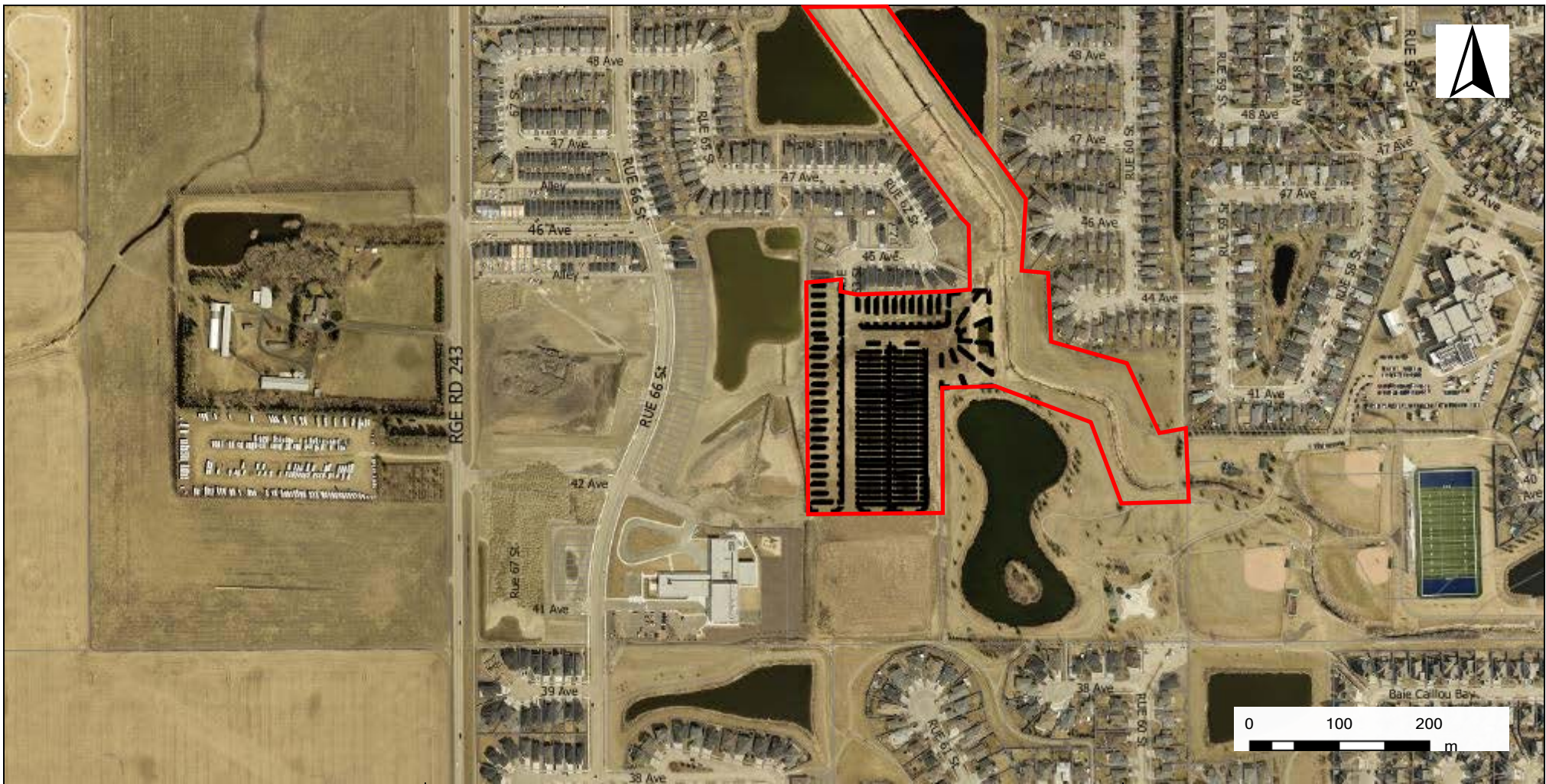
b. SDA-22-13 Le Reve Phase 1C Time Extension

Tentative Plan of subdivision to create 1 Medium Density Residential Lot from a portion of Plan 782 1085, Block 1 and 2

- *Attachments: Location Map and Tentative Subdivision Plan*

2. The Subdivision Authority's decision will be posted on January 24th, 2025

Contact the File Planner at planning@beaumont.ab.ca or 780-929-8782 for more information.



Location Map

Legend

City of Beaumont
5600 49 Street
Beaumont, AB
T4X 1A1

A portion of N.W. 1/4 Sec. 27-50-24-W4M

Application No.
SDA-24-15

Mapped By:
Aleshia Ingram

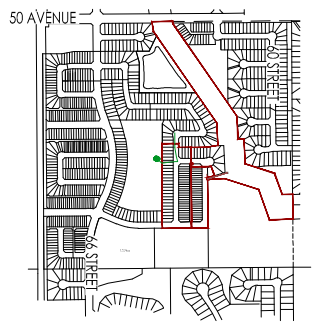
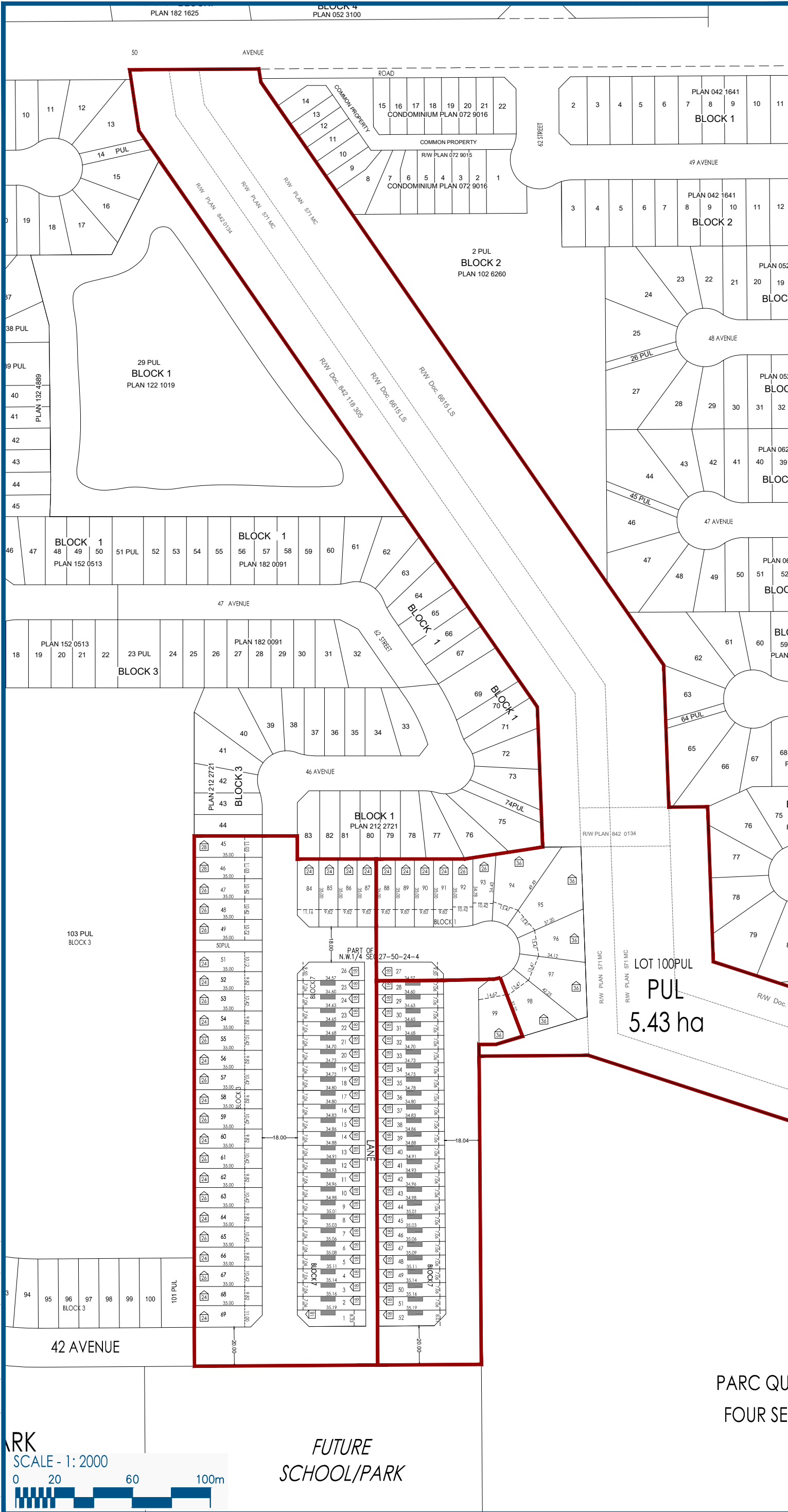
Checked By:
Yasmin Sharp

Numeric Scale
1: 6427

Date
Friday, November 1, 2024

Projected Coordinate System
CANADA NAD 83-3TM 114

- Ruisseau Phase 9
- Registered Parcels
- Proposed Subdivision

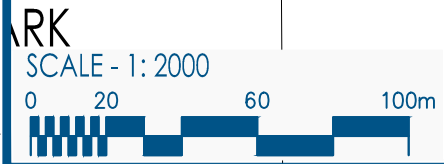


LOCATION PLAN
NOT TO SCALE
SHOWING PROPOSED SUBDIVISION OF PART OF:
"NW-27-50-25-W4M"

NOTES:
THIS IS NOT A LEGAL PLAN AND MAY BE SUBJECT TO ERRORS AND/OR OMISSIONS.
ALL DISTANCES ARE SHOWN IN METRES AND DECIMALS THEREOF.
DISTANCES ON CURVED BOUNDARIES ARE ARC LENGTHS.
AREA DEALT WITH BY THIS PLAN SHOWN BOUNDED AS THUS. —
ZERO LOT LINE DENOTED AS THUS. —

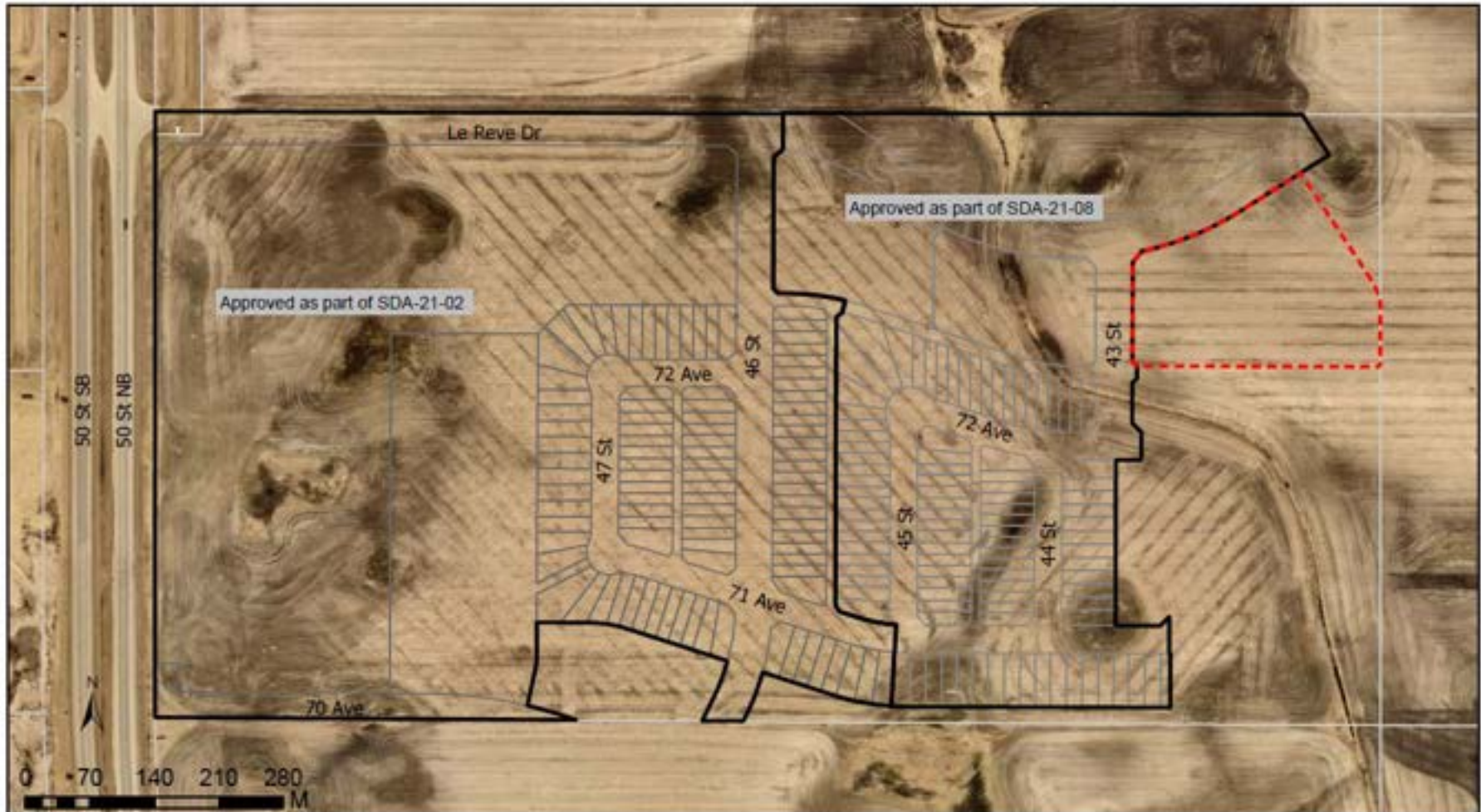
STATISTICS:
CN 92 LOTS
TOTAL = 92 LOTS

AREAS:
ER = 5.36 ha
ROADS, LANES & PUL = 1.45 ha
RESIDENTIAL LOTS = 3.01 ha
TOTAL = 9.82 ha



FUTURE SCHOOL/PARK

PARC QUATRE SAISONS
FOUR SEASONS PARK



Location Map - Le Reve

Portion of QS-S SEC-01 TWP-051 RGE-24 MER-4

Numeric Scale

1:6,000

Date - mm/dd/yr

09/26/2022

Mapped by

Uche.D

Projected Coordinate System:

CANADA NAD 83-3TM-114





Checked by

Sara.B

Disclaimer:

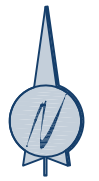
ALL RIGHTS RESERVED. NO PART OF THIS MAP MAY BE REPRODUCED IN ANY FORM OR BY ANY MEANS WITHOUT THE WRITTEN CONSENT OF THE CITY OF BEAUMONT. THE CITY OF BEAUMONT PROVIDED THIS INFORMATION IN GOOD FAITH, BUT PROVIDES NO WARRANTY NOR ACCEPTS ANY LIABILITY ARISING FROM INACCURATE, INCOMPLETE OR MISLEADING INFORMATION OR ITS IMPROPER USE. INFORMATION IS SHOWN ON A RECURRING BASIS. DO NOT REPRODUCE WITHOUT PERMISSION. City of Beaumont 5600 49 Street Beaumont Alberta T4X 1A1 Telephone: 780-523-8721 Email: info@beaumont.ab.ca

Legend

-  Le Reve Phase 1A & 1B Boundary
-  Le Reve Phase 1C Proposed Boundary
-  Proposed Parcels
-  Registered Parcels



City of Beaumont
5600 49 Street
Beaumont, AB
T4X 1A1



N.W.1/4 SEC. 1-51-24-4

West Half of
N.E.1/4 SEC. 1-51-24-4

Park

1 MR
BLOCK 2

Stage 1C
1.580 ha
(3.905 Acres)

Le Reve Drive

Future
Development

MDR
1.479 ha
(3.656 Acres)

MDR
1
BLOCK 3

Stage 1B
Phase 1

24.00

24.00

126.33

8.0m ALLEY

8.00

8.0m ALLEY

Future
Development

BLOCK 2
PLAN 7821085

Stage 1B

BLOCK 1
PLAN 7821085

LEGEND:

- Stage 1C Subdivision Boundary
- Stage 1B Phase 2 Boundary
- Stage 1B Phase 1 Boundary

NOTES:

- All distances are shown in metres and decimals thereof.
- Distances on the curved boundaries are arc lengths.
- Area dealt with by this plan shown bounded thus contains: **1.580 ha**, 1 MDR parcels.

THIS IS A CONCEPT PLAN ONLY. SUBJECT TO CHANGE.

DATE:

NOVEMBER 15, 2022

PROJECT MANAGER:

VINCENT_LIU

CLIENT:

REDCO DEVELOPMENTS LTD

PROJECT:

LE RÊVE SOUTHWEST - STAGE 1C
BLOCK 1, PLAN 7821085

DRAWING TITLE:

TENTATIVE PLAN OF SUBDIVISION

PROJECT NO/ DRAWING NO:

2019074-001



Invistec Consulting Ltd.

Suite 1700, 10130 - 103 Street NW
Edmonton, Alberta, T5J 3N9
(780) 293 - 7373
www.invistec.ca

SCALE: 0 10 20 30 40 50
1:1000

THE CONTRACTOR SHALL VERIFY AND BE RESPONSIBLE FOR ALL DIMENSIONS. DO NOT SCALE THE DRAWING. ANY ERRORS OR OMISSIONS SHALL BE REPORTED TO INVISTEC CONSULTING LTD. AS SOON AS POSSIBLE.
THE COPYRIGHTS TO ALL DESIGNS AND DRAWINGS ARE THE PROPERTY OF INVISTEC CONSULTING LTD. REPRODUCTION OR USE FOR ANY PURPOSE OTHER THAN THAT AUTHORIZED BY INVISTEC CONSULTING LTD. IS PROHIBITED.